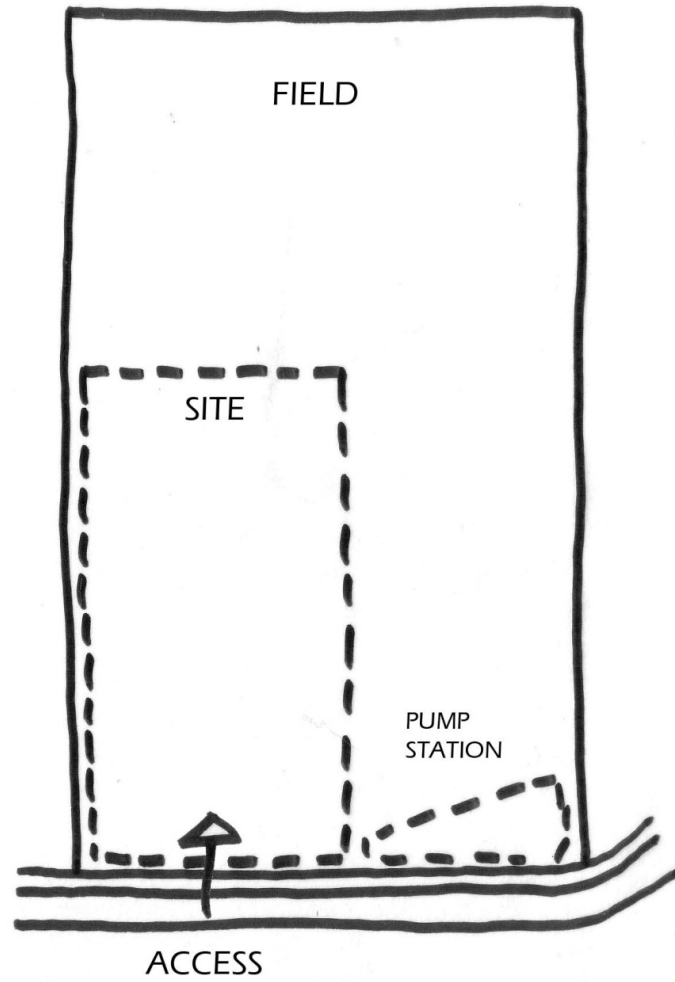




PETER LEGGE ASSOCIATES

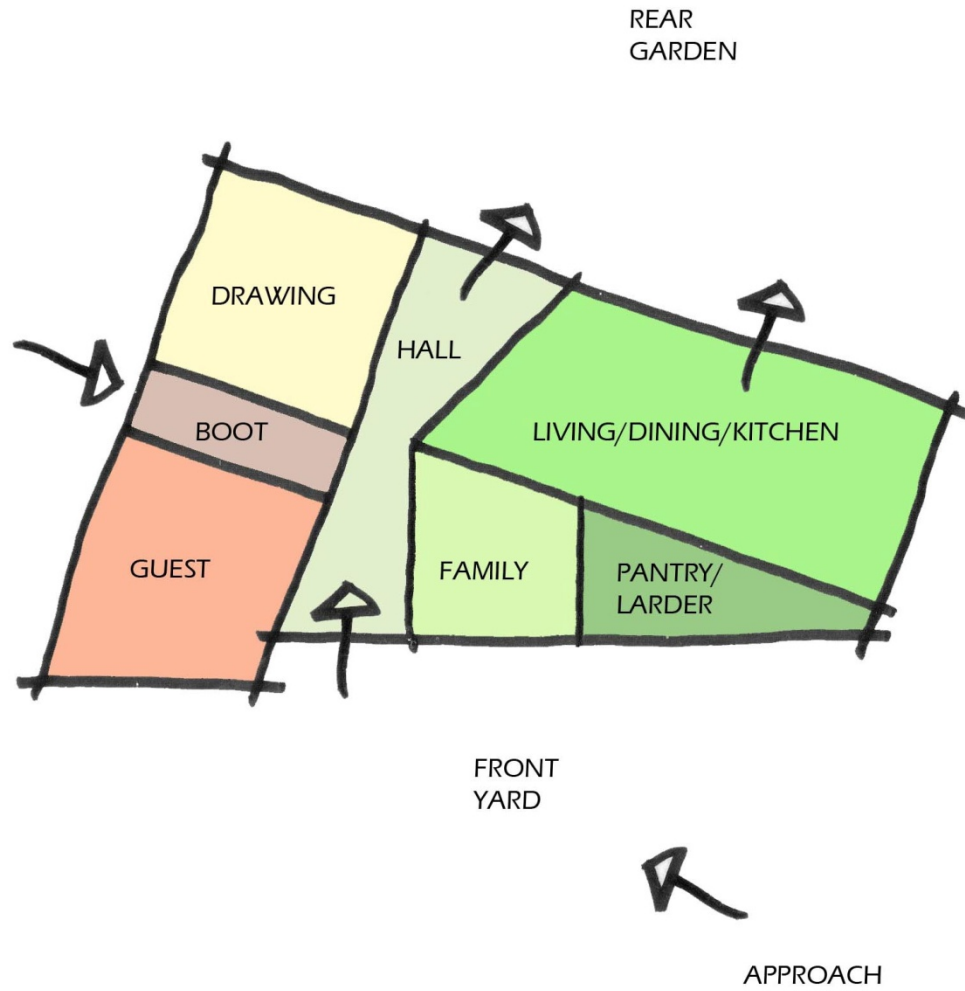
architects and design consultants

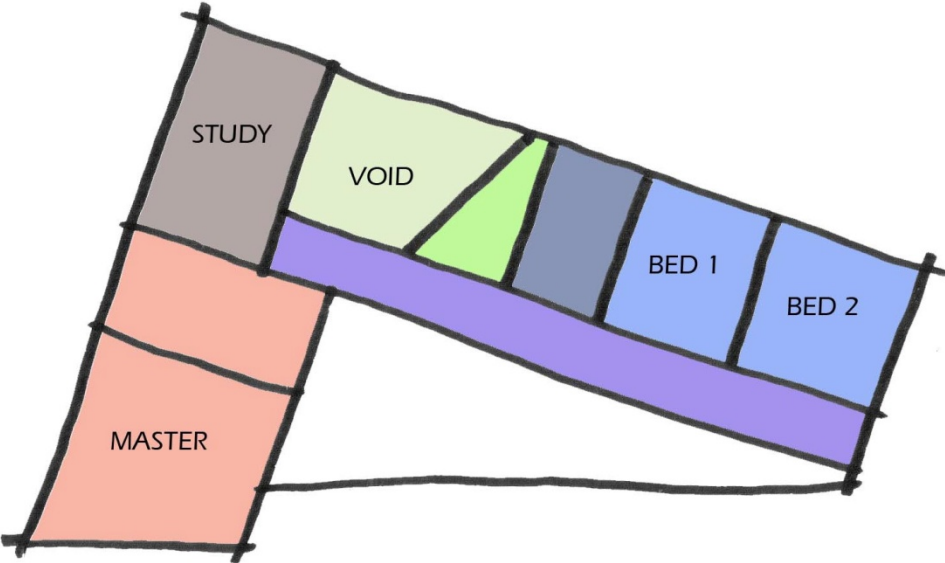
the studio, abbeycourt, kill-o-the-grange, blackrock, co. dublin
t. 01 2302851 / 01 2302852 e. plegge@indigo.ie w. www.plaarchitects.ie



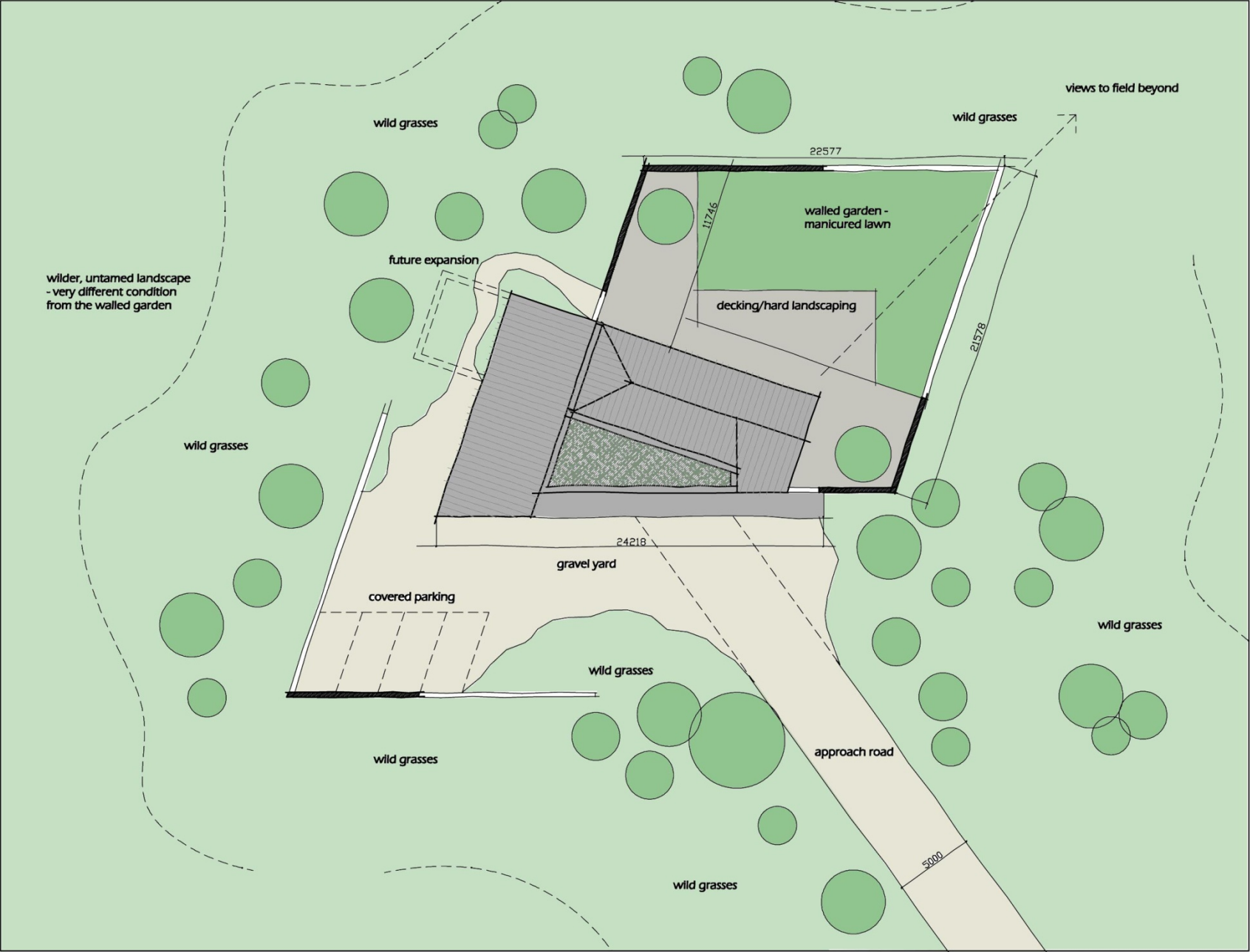


The image cannot be displayed. Your computer may not have enough memory to open the image, or the image may have been corrupted. Restart your computer, and then open the file again. If the red x still appears, you may have to delete the image and then insert it again.





-  LAUNDRY
-  FAMILY BATHROOM





PETER LEGGE
ASSOCIATES

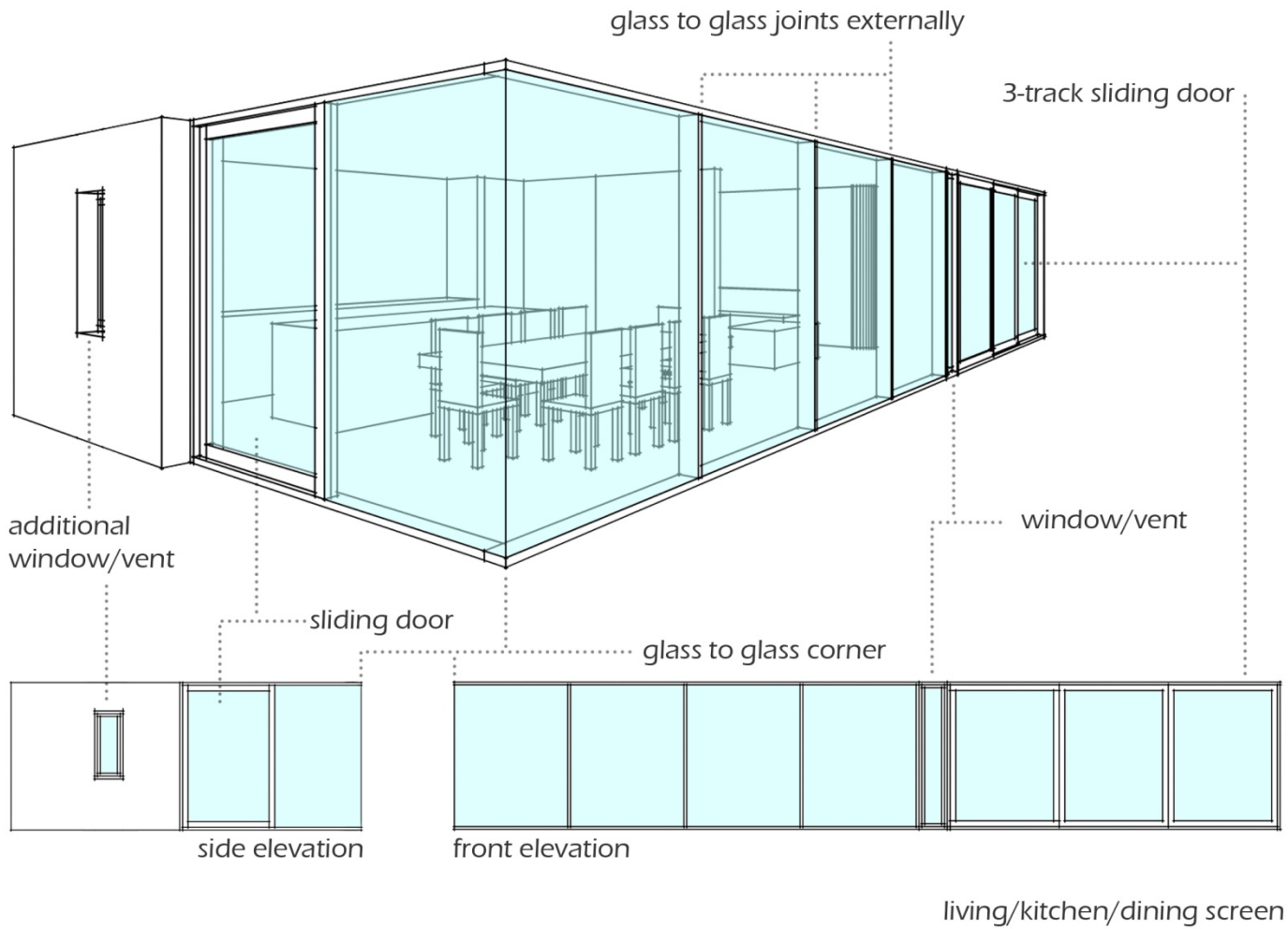


NORTH WEST VIEW

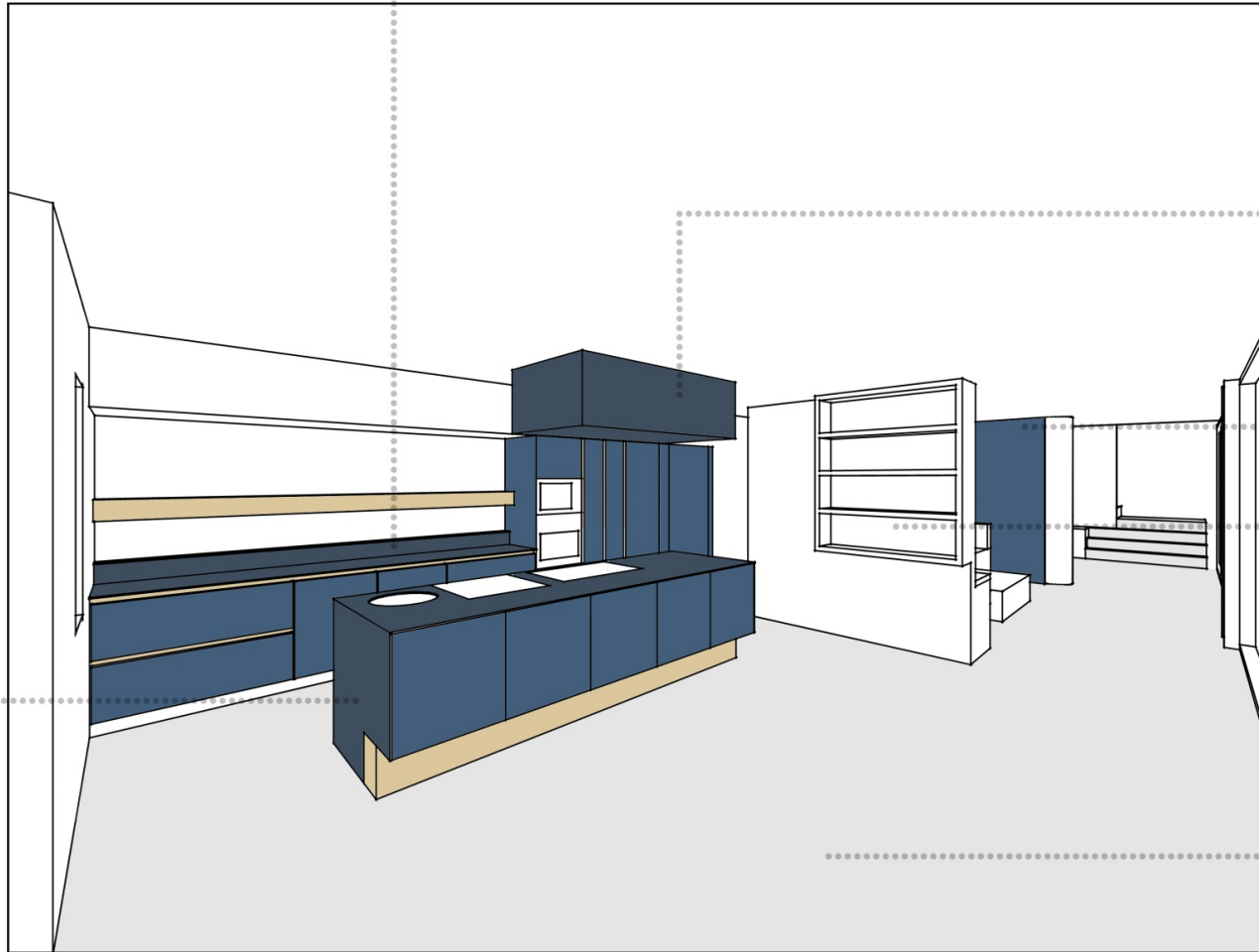


PETER LEGGE
ASSOCIATES





KITCHEN UNIT WITH SLATE TOP AND SHELF/BACKSPLASH,
DRAWERS/CUPBOARD/DISHWASHER TO FACE. HIGHER TIMBER SHELF



SLATE CLAD BULKHEAD TO CONTAIN
LIGHTING/EXTRACTOR

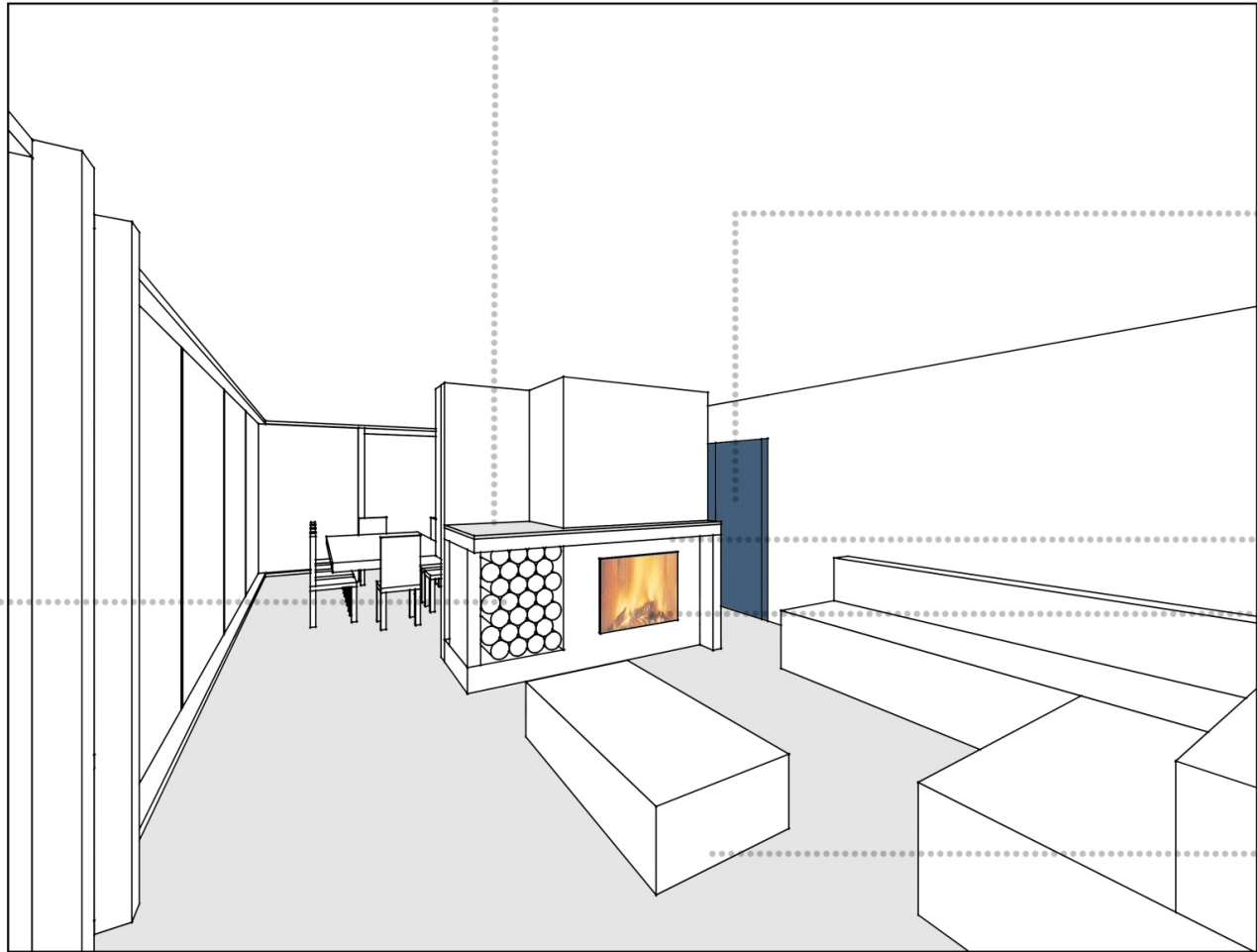
SLIDING DOOR TO LIVING VISIBLE

OPEN SHELVING TO CENTRE DIVIDE
FOR EVERYDAY PLATES, GLASSES,
COOKERY BOOKS, ETC. REFERENCING
THE TRADITIONAL IDEA OF A DRESSER

KITCHEN TABLE OMITTED

KITCHEN ISLAND UNIT WITH SLATE TOP AND SIDES; DRAWERS/CUPBOARDS TO FACES REFERENCING THE
TRADITIONAL IDEA OF A SIDEBOARD

EXTENDED MANTLEPIECE ABOVE LOG STORE (FAMILY PICTURES, MEMENTOS, FLOWER ARRANGEMENTS ETC.)



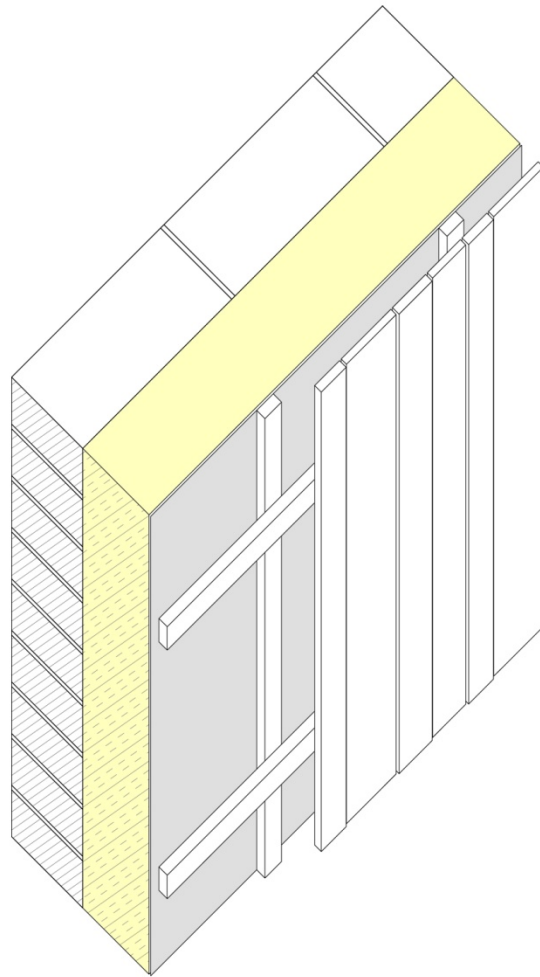
CONCEALED DOOR TO THE PANTRY IS INTEGRATED INTO THE KITCHEN UNITS

MANTLEPIECE ABOVE FIREPLACE, VALENTIA SLATE TOP FINISH AS PER KITCHEN

FIREPLACE OPE FED BY LOG STORE TO THE RIGHT

LOOSE FURNITURE INDICATIVE ONLY

LOG STORE 700MM WIDE X 800MM DEEP X 900MM HIGH, VALENTIA SLATE FINISH TO BASE



construction type

- single leaf concrete blockwork on flat
- structural clarity & speed of construction
 - externally insulated
- cladding fixed back to concrete structure
 - items tbc
 - insulation type
- structurally integrated panel (SIP), rockwool, eps
 - cladding fixing type
- SIP/aluminium brackets(Eurofox & Macfox Isolator)

















